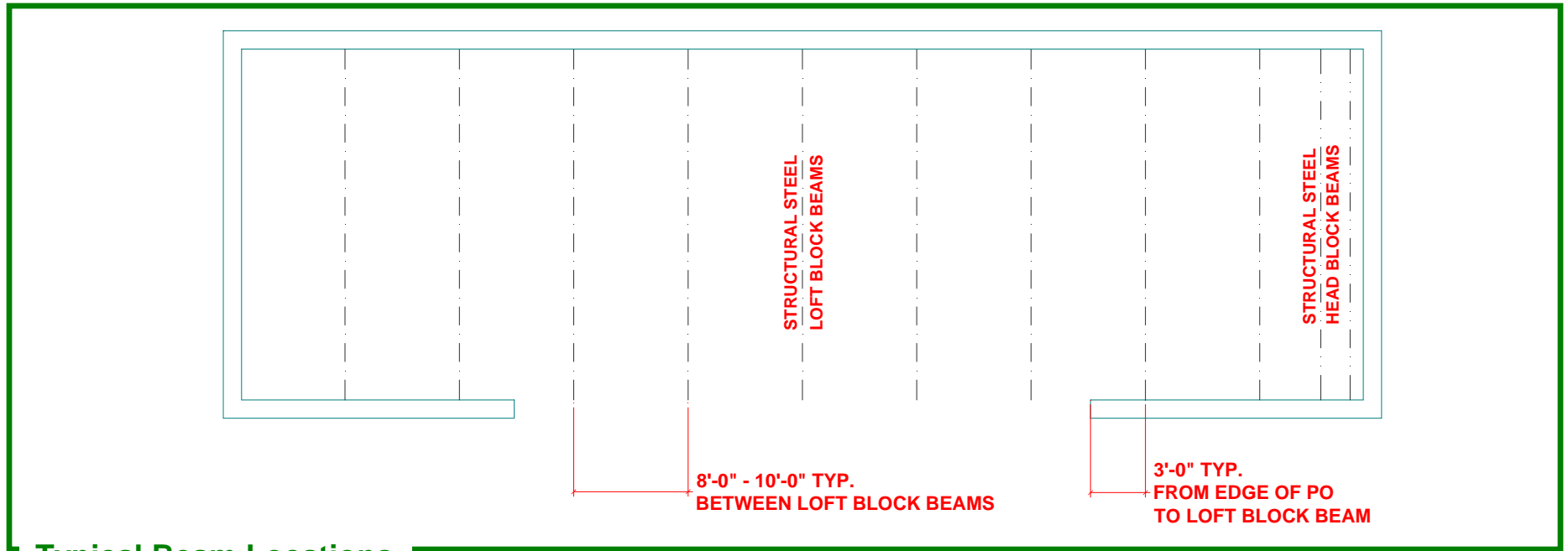
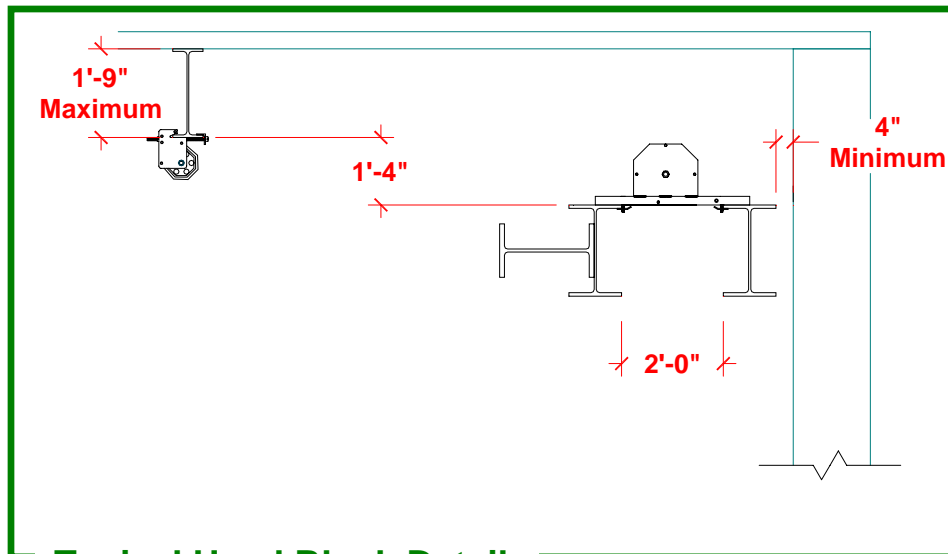


Typical Rigging Details



Typical Beam Locations

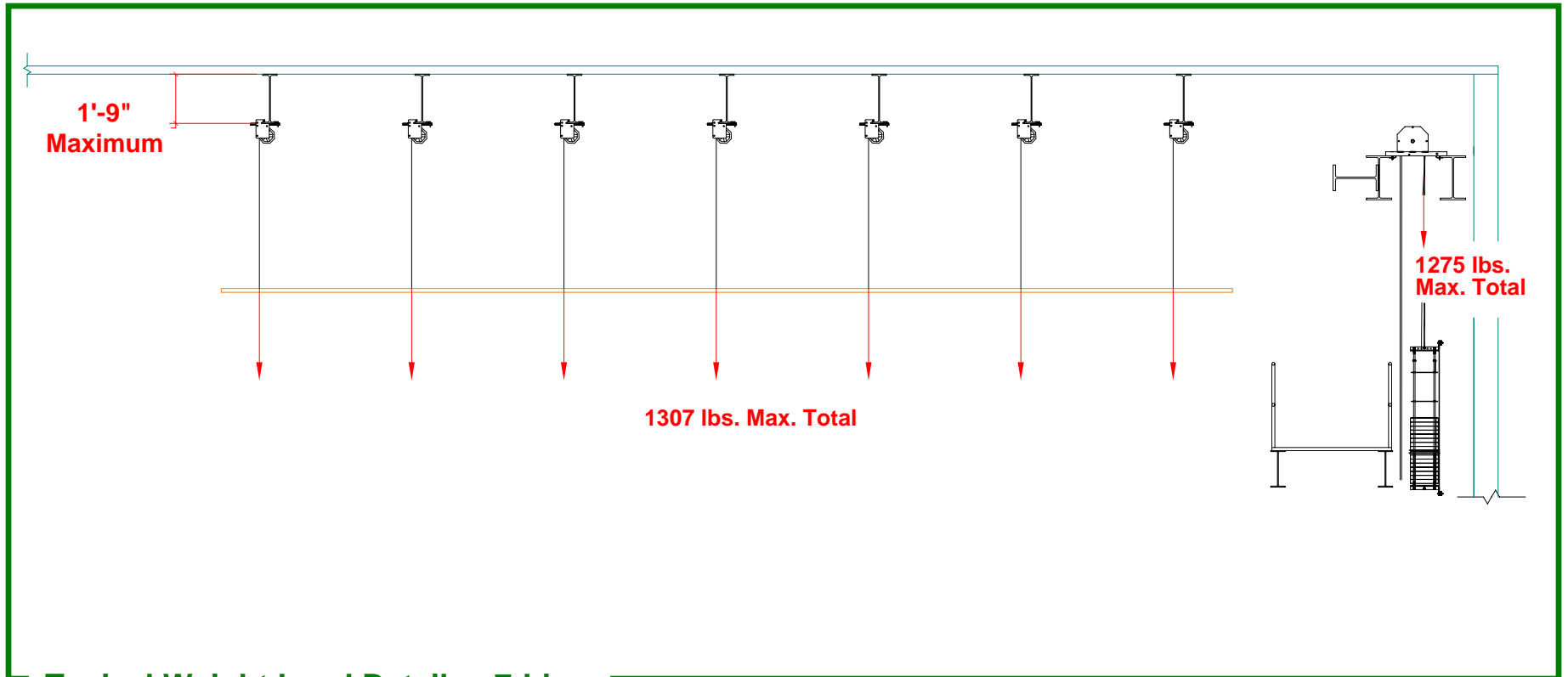


Typical Head Block Detail



2 South Avenue • Sewickley PA 15143
TEL: 412-534-4500 • FAX: 412-534-4505
www.pittsburghstage.com
pghstage@pittsburghstage.com

Typical Rigging Details

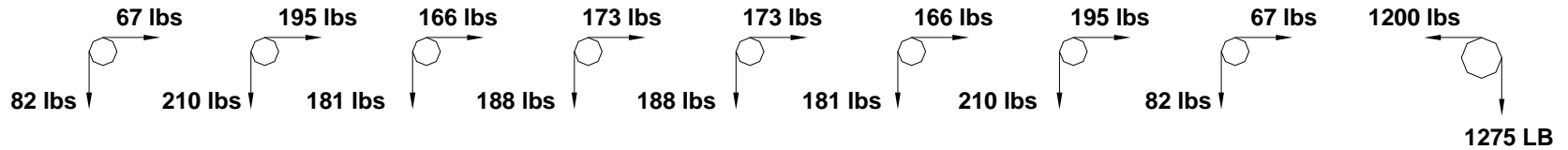


Typical Weight Load Detail - 7-Line

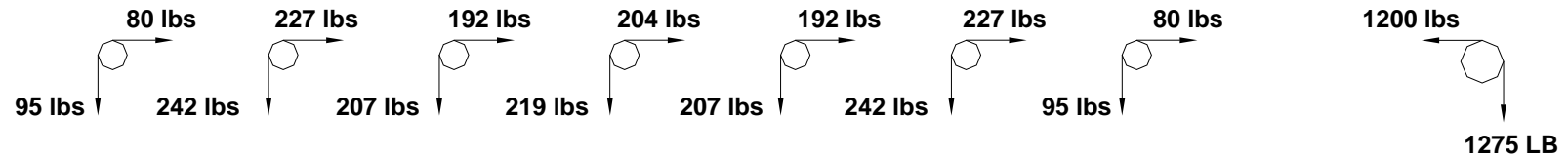
PITTSBURGHSTAGE INC
COMMITMENT TO QUALITY

2 South Avenue • Sewickley PA 15143
TEL: 412-534-4500 • FAX: 412-534-4505
www.pittsburghstage.com
pghstage@pittsburghstage.com

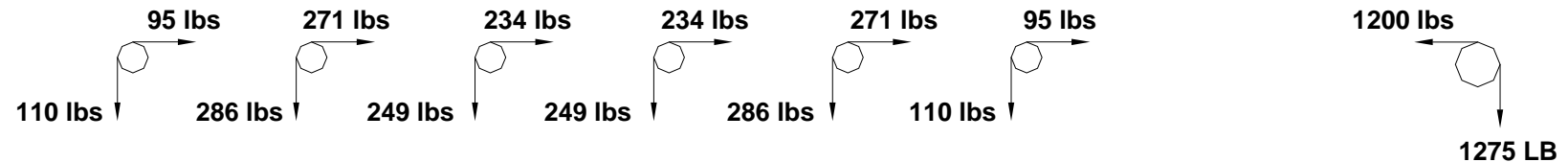
Typical Rigging Details



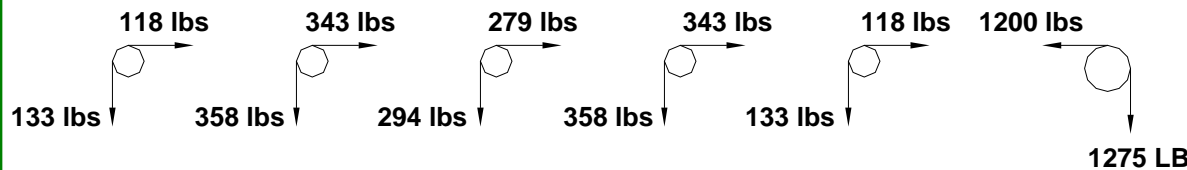
Loading Schematic - 8 Line



Loading Schematic - 7 Line



Loading Schematic - 6 Line

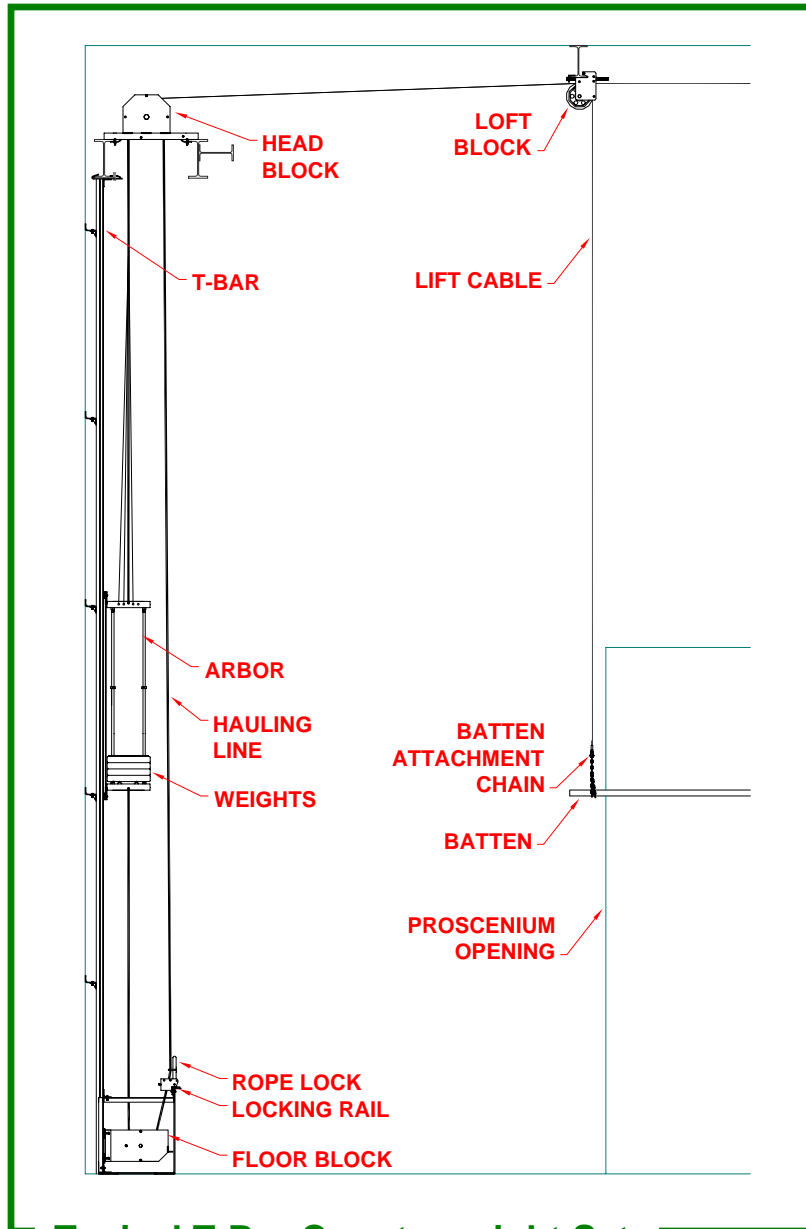


Loading Schematic - 5 Line

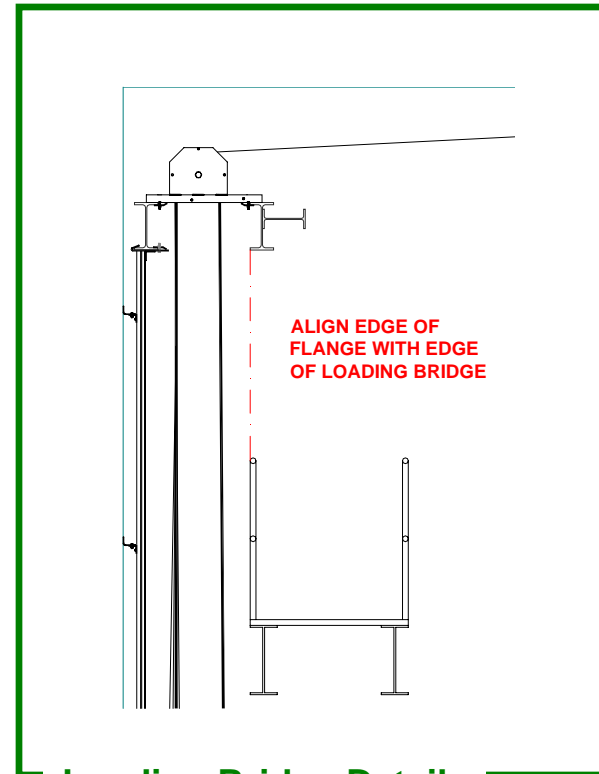


2 South Avenue • Sewickley PA 15143
 TEL: 412-534-4500 • FAX: 412-534-4505
 www.pittsburghstage.com
 pghstage@pittsburghstage.com

Typical Rigging Details



Typical T-Bar Counterweight Set

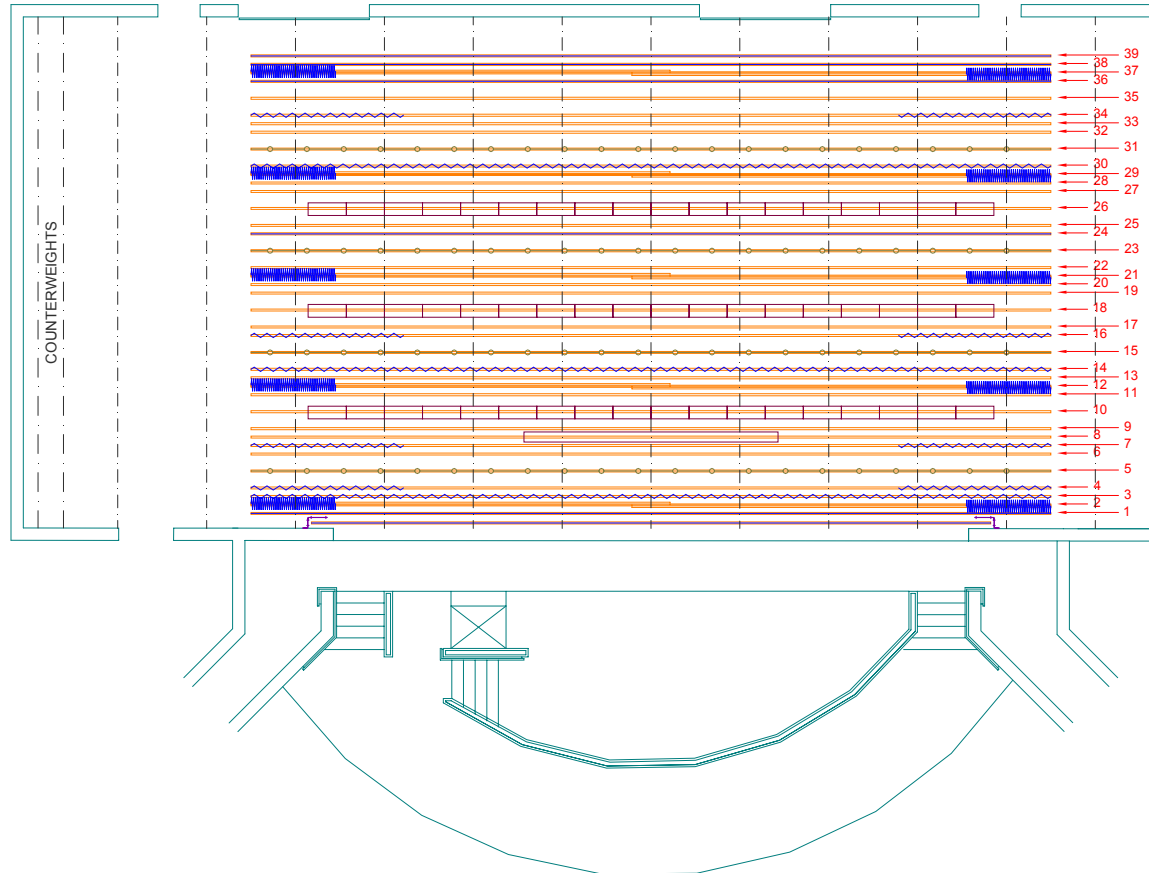


Loading Bridge Detail



2 South Avenue • Sewickley PA 15143
TEL: 412-534-4500 • FAX: 412-534-4505
www.pittsburghstage.com
pghstage@pittsburghstage.com

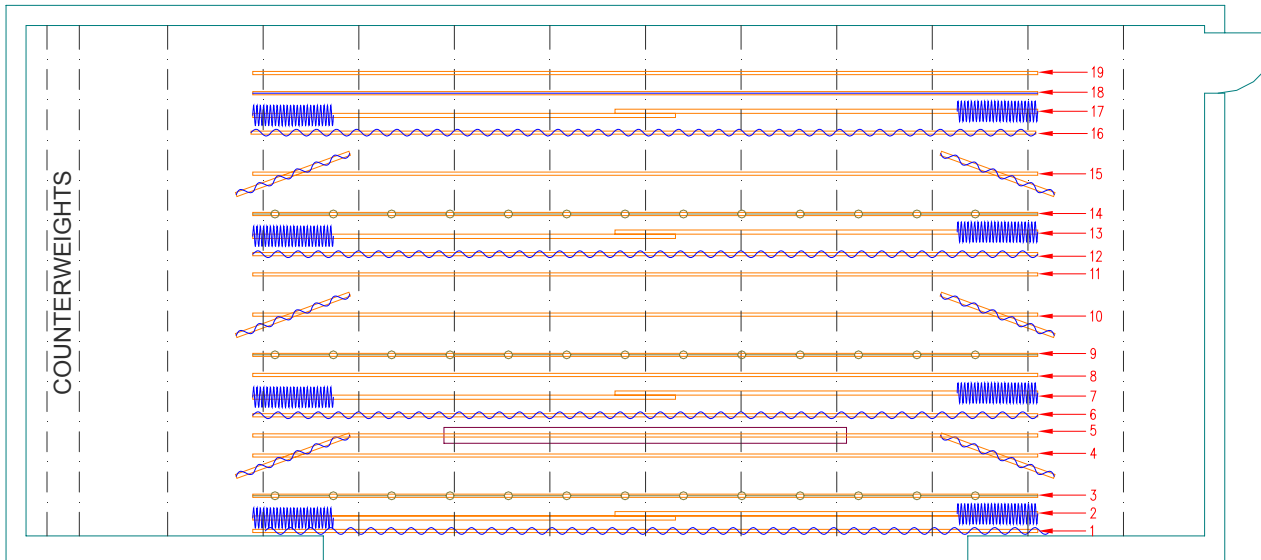
Typical Stage Equipment Design



ITEM #	DESCRIPTION	RIGGING	DIST. FROM P.O.
F/C	FIRE CURTAIN	BRAIL WINCH	5"
1	VALANCE	COUNTERWEIGHT	1'-2"
2	FRONT CURTAIN	COUNTERWEIGHT	1'-10"
3	TEASER	COUNTERWEIGHT	2'-6"
4	TORMENTORS	COUNTERWEIGHT	3'-2"
5	FIRST ELECTRIC	COUNTERWEIGHT	4'-6"
6	SPARE	COUNTERWEIGHT	5'-10"
7	SIDE LEGS	COUNTERWEIGHT	6'-6"
8	PROJECTION SCREEN	COUNTERWEIGHT	7'-2"
9	SPARE	COUNTERWEIGHT	7'-10"
10	ACOUSTICAL PANELS	COUNTERWEIGHT	9'-2"
11	SPARE	COUNTERWEIGHT	10'-6"
12	TRAVELER	COUNTERWEIGHT	11'-2"
13	SPARE	COUNTERWEIGHT	11'-10"
14	BORDER	COUNTERWEIGHT	12'-6"
15	SECOND ELECTRIC	COUNTERWEIGHT	13'-10"
16	SIDE LEGS	COUNTERWEIGHT	15'-2"
17	SPARE	COUNTERWEIGHT	15'-10"
18	ACOUSTICAL PANELS	COUNTERWEIGHT	17'-2"
19	SPARE	COUNTERWEIGHT	18'-6"
20	SPARE	COUNTERWEIGHT	19'-2"
21	TRAVELER	COUNTERWEIGHT	19'-10"
22	SPARE	COUNTERWEIGHT	20'-6"
23	THIRD ELECTRICS	COUNTERWEIGHT	21'-10"
24	SCRIM	COUNTERWEIGHT	23'-2"
25	SPARE	COUNTERWEIGHT	23'-10"
26	ACOUSTICAL PANELS	COUNTERWEIGHT	25'-2"
27	SPARE	COUNTERWEIGHT	26'-6"
28	SPARE	COUNTERWEIGHT	27'-2"
29	TRAVELER	COUNTERWEIGHT	27'-10"
30	BORDER	COUNTERWEIGHT	28'-6"
31	FOURTH ELECTRICS	COUNTERWEIGHT	29'-10"
32	SPARE	COUNTERWEIGHT	31'-2"
33	SPARE	COUNTERWEIGHT	31'-10"
34	SIDE LEGS	COUNTERWEIGHT	32'-6"
35	SPARE	COUNTERWEIGHT	33'-10"
36	DROP	COUNTERWEIGHT	35'-2"
37	TRAVELER	COUNTERWEIGHT	35'-10"
38	DROP	COUNTERWEIGHT	36'-6"
39	SKY DROP	COUNTERWEIGHT	37'-2"

Typical High School Stage Layout

Typical Stage Equipment Design



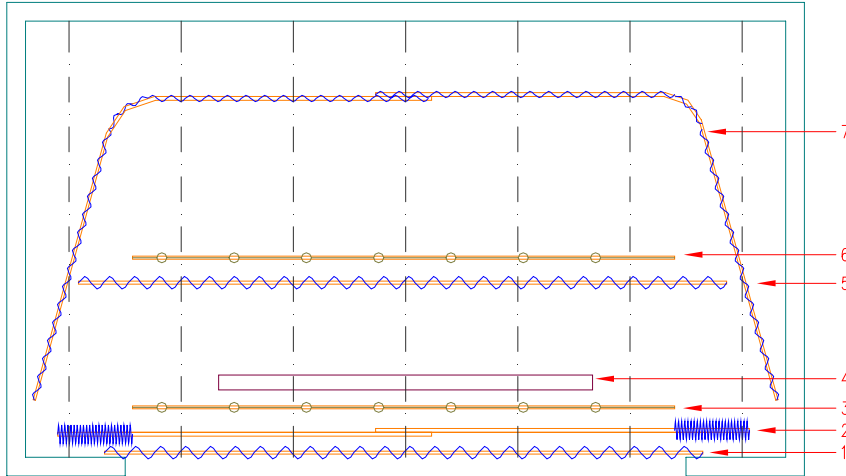
ITEM #	DESCRIPTION	RIGGING	DIST. FROM P.O.
1	VALANCE	COUNTERWEIGHT	0'-3"
2	FRONT CURTAIN	DEAD HUNG	1'-0"
3	FIRST ELECTRIC	COUNTERWEIGHT	2'-0"
4	SIDE LEGS	DEAD HUNG	4'-0"
5	PROJECTION SCREEN	COUNTERWEIGHT	5'-0"
6	BORDER	COUNTERWEIGHT	6'-0"
7	TRAVELER	DEAD HUNG	7'-0"
8	SPARE	COUNTERWEIGHT	8'-0"
9	SECOND ELECTRIC	COUNTERWEIGHT	9'-0"
10	SIDE LEGS	DEAD HUNG	11'-0"
11	SPARE	COUNTERWEIGHT	13'-0"
12	BORDER	COUNTERWEIGHT	14'-0"
13	TRAVELER	DEAD HUNG	15'-0"
14	THIRD ELECTRIC	COUNTERWEIGHT	16'-0"
15	SIDE LEGS	DEAD HUNG	18'-0"
16	BORDER	COUNTERWEIGHT	20'-0"
17	REAR CURTAIN	DEAD HUNG	21'-0"
18	DROP	COUNTERWEIGHT	22'-0"
19	SPARE	COUNTERWEIGHT	23'-0"

Typical Middle School Stage Layout



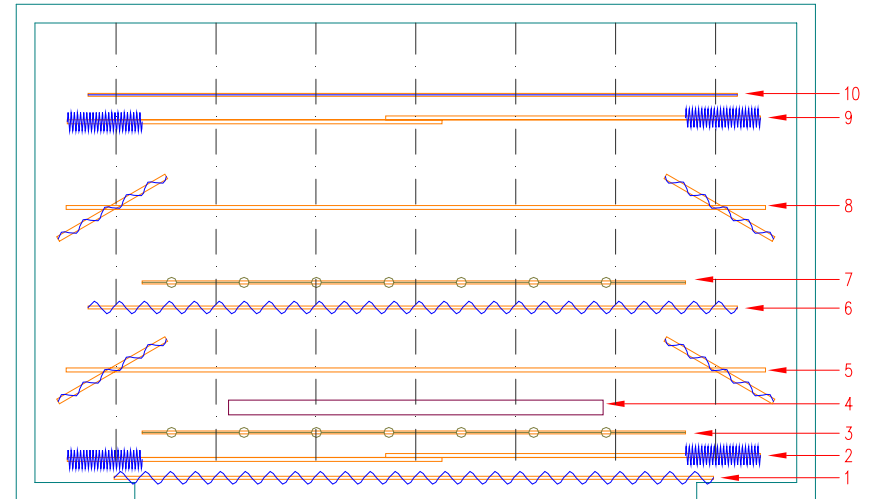
2 South Avenue • Sewickley PA 15143
 TEL: 412-534-4500 • FAX: 412-534-4505
www.pittsburghstage.com
pghstage@pittsburghstage.com

Typical Stage Equipment Design



ITEM #	DESCRIPTION	RIGGING	DIST. FROM P.O.
1	VALANCE	DEAD HUNG	0'-3"
2	FRONT CURTAIN	DEAD HUNG	1'-0"
3	FIRST ELECTRIC	DEAD HUNG	2'-0"
4	PROJECTION SCREEN	DEAD HUNG	3'-0"
5	BORDER	DEAD HUNG	7'-0"
6	SECOND ELECTRIC	DEAD HUNG	8'-0"
7	CYCLORAMA	DEAD HUNG	14'-0"

ITEM #	DESCRIPTION	RIGGING	DIST. FROM P.O.
1	VALANCE	DEAD HUNG	0'-3"
2	FRONT CURTAIN	DEAD HUNG	1'-0"
3	FIRST ELECTRIC	DEAD HUNG	2'-0"
4	PROJECTION SCREEN	DEAD HUNG	3'-0"
5	SIDE LEGS	DEAD HUNG	4'-6"
6	BORDER	DEAD HUNG	7'-0"
7	SECOND ELECTRIC	DEAD HUNG	8'-0"
8	SIDE LEGS	DEAD HUNG	11'-0"
9	REAR CURTAIN	DEAD HUNG	14'-6"
10	DROP	DEAD HUNG	15'-6"



Typical Elementary School Stage Layouts